

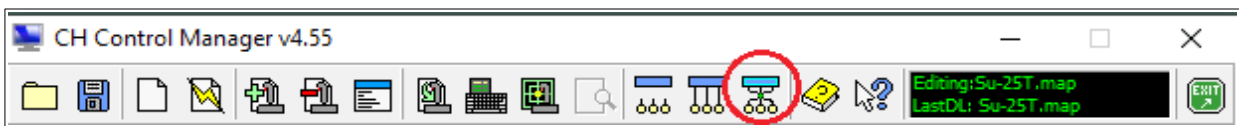
# CH HOTAS – Su-25T

## /w SRS Support

### Installation Instructions

**Download and Configure your DCS World Controls as follows.**

1. Download the Su-25T CH HOTAS zip file and open.
2. Copy the “Su-25T.map” and “Su-25T.cms” files to a local folder (the default folder is ../documents/CH Control Manager/Maps). Both files must be located in the same folder.
3. Using “CH Control Manager” open the above “Su-25T.map” file and download it to your CH Products HOTAS. Set the CH Control Manager to “Mapped Mode”.



4. Copy these DCS World Control profile files to your “..\Saved Games\DCS\Config\Input\su-25T” folder, or other location of preference.
  1. “Su-25T - CH Products-Rudder Profile.diff.lua”
  2. “Su-25T - CH Products-Rudder Profile.diff.lua”
  3. “Su-25T - CH Products-Throttle Profile.diff.lua”
  4. “Su-25T Keyboard Profile.diff.lua”
5. From your DCS World / Options / Controls tab, in the “Aircraft Control Mode” field, select Su-25T, then highlight the “Keyboard” column, then select the “Load Profile” button. Using the “Load Profile” dialog window, navigate to the folder where you copied the \*profile.diff.lua files and select the “Su-25T Keyboard Profile.diff.lua” file. Click OK.
6. Now, in the DCS World / Options / Controls tab do the same procedure for the CH Control Manager rudder, throttle and stick columns using the respective CH Products \*Profile.diff.lua file. You will do this operation three times, one for each device, with it’s respective \*profile.diff.lua file. Note: you can identify the device/column by moving an axis, you will see that axis value indication change as a small white horizontal line in it’s respective field as the axis moves. Click OK to exit options and save.  
(CH Control Manager Device 1, should = the fighterStick. CH Control Manager Device 2, should = the throttle, and CH Control Manager Device 3, should = the rudders).

7. Now, you will need to set the UI Layer manually, it is only 2 buttons. From your DCS World / Options / Controls tab, in the “Aircraft Control Mode” field, select “UI Layer” in the drop down list (at the bottom). Then highlight the CH Control Manager **Throttle** column. For the “toggle VR Spyglass Zoom” action, set that field to “joy\_BTN18”. Do so by selecting the correct column and field, then clicking the “Add” button. From the dialog box, “Key / Button” drop down list, select joy\_BTN18.
8. Do the same procedure for the “toggle VR Zoom” action. Set this field, also in the throttle column to “joy\_BTN2” Again Click OK to save and exit the DCS World Control Options.

## Configuring SRS.

In the DCS-SRS Client “Controls” tab. Set each action as below.

Control	Device	Button	Description
Radio 1	CH Control Manager Device 2	12	Throttle Hat 2 Up [B12]
Radio 2	CH Control Manager Device 2	10	Throttle Hat 2 Down [B10]
Push to Talk - PTT	Keyboard	44	Backslash “\” (will show as 44)
Toggle Guard	CH Control Manager Device 2	25	Throttle Hat 2 Right [B9] (in shifted mode)
Radio Channel Up	CH Control Manager Device 2	28	Throttle Hat 2 Up [12] (in shifted mode)
Radio Channel Down	CH Control Manager Device 2	26	Throttle Hat 2 Down [10] (in shifted mode)

Included in this zip file are custom png images which you can import to your Kneeboard. Especially helpful in VR. [DCS Kneeboard Builder](#) is highly suggested for this.

NOTE: If your not interested in using the DCS World AI Communications menus with SRS, you can simply clear this field in the DCS World / Options / Controls tab Communications Input Category.

NOTE: If your using [VoiceAttack](#) / [Viacom PRO](#) with SRS, read the Viacom PRO manual, “Mutiplayer” chapter for additional configuration instructions. This will require additional configuration of Viacom, SRS and DCS World for your preferences, as described in the Viacom PRO manual, and as such is beyond the scope of these installation instructions. However, Viacom PRO is for sure worth the efforts and small cost of [VoiceAttack](#) and [Viacom PRO](#).